

# VX Veracitor series

Diesel and LP Gas Forklift Trucks

4,000kg - 5,500kg

**Yale**<sup>®</sup>  
People. Products. Productivity.<sup>™</sup>





# VERACITOR VX SERIES

## Contents

<b>The True Solution</b>	5	■ Low Cost of Ownership	
<b>True Dependability</b>	6	<b>True Serviceability</b>	14
■ Reliability		■ Maximum Access	
■ Powertrain		<b>Choices and Versatility</b>	16
■ Reducing Wear and Tear		■ Technical Capabilities	
■ Innovative Cooling System		■ Engine Specifications	
■ Intellix Vehicle System Manager		<b>Highlights and Options</b>	17
<b>True Productivity</b>	8	■ Dependability	
■ Performance		■ Productivity	
■ Three Engine Options		■ Ergonomics	
■ Four Transmission Options		■ Cost of Ownership	
<b>True Comfort</b>	10	■ Service	
■ Intelligent Ergonomics			
■ Hydraulic Control Lever Options			
■ Auto Deceleration System and Dynamic Auto Deceleration System			
■ EZ-LP Gas Tank Bracket			
<b>True Value</b>	12		





THE TRUE SOLUTION

## The Yale Veracitor VX Series

Yale has invested heavily in people, processes and capital equipment to deliver this innovative series of internal combustion engine lift trucks. Each lift truck in the Veracitor VX range has been designed with component commonality, for simplified operational maintenance and bespoke productivity packages, to meet specific customer needs. Each lift truck demonstrates Yale's total commitment to innovative design, comprehensive testing, high quality, advanced components and superior manufacturing. The company's leadership in the materials handling sector has been achieved through extensive research among existing and prospective customers, lift truck operators and experts in ergonomics and biometrics. The Yale Veracitor VX Series offers dependability, productivity, comfort for operators and real value for customers through an impressively low cost of ownership. That's why each Yale Veracitor VX lift truck represents a true solution to today's materials handling needs.

### TRUTH N°1

Our innovative cooling system enables dramatically lower operating temperatures and much longer running times.



## TRUE DEPENDABILITY

# Reliability

Yale Veracitor VX lift trucks are designed and manufactured to be the most dependable in today's market. That dependability is not only in evidence throughout the Veracitor VX Series, but also in Yale's expert advice, 24 hours parts availability and the most comprehensive warranty coverage in the industry. The Veracitor VX Series can reduce downtime by up to 30% and world-class reliability is achieved in four key areas.

### Powertrain

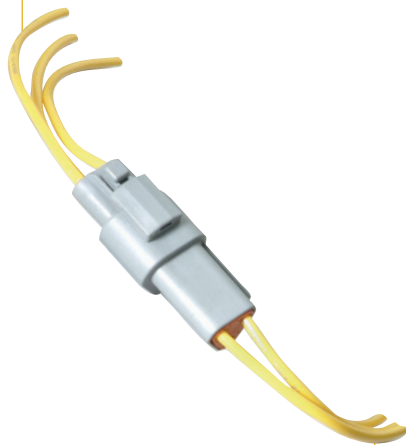
The reliable, rugged powertrain delivers exceptional durability through its computer-controlled engine and transmission, its tough clutch packs and remarkably robust gears and shafts. Long term durability is achieved by enhanced monitoring and the optional Powertrain Protection Systems which, for example, eliminate high speed power reversal. The engines offer low emissions as well as easy maintenance access.

### Reducing Wear and Tear

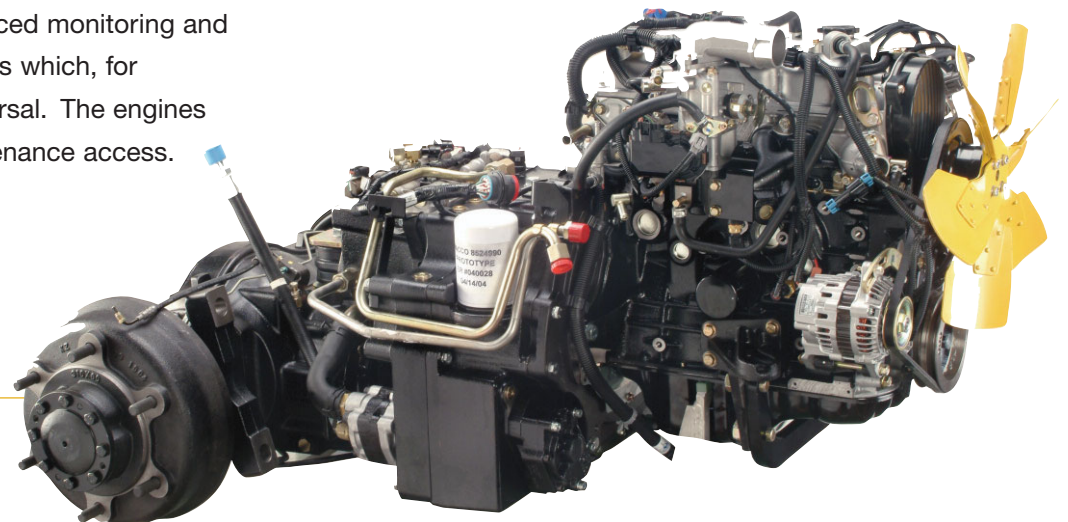
Yale has raised the standards in lift truck serviceability and the Veracitor VX has the highest serviceability ratings in the industry. The Veracitor VX offers reliable electronics and sealed connectors, allowing the entire truck to be pressure washed. Hall effect sensors have solid-state components that are magnetically operated and are 100% sealed from the environment.

### TRUTH N°2

Continuous Stability Enhancement (CSE) improves lateral stability and boosts driver confidence.



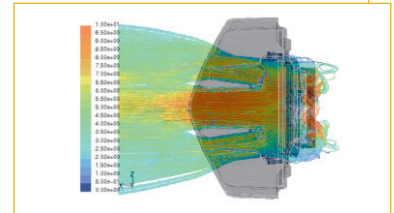
Sealed Electrical Connectors





### Innovative Cooling System

The cooling system operates at lower temperatures. This offers significant improvement when it comes to cooling air flow, increasing component life and minimising the risk of overheating in heavy-duty applications. Optimised ducting and high volume tunnels allow Veracitor VX lift trucks to run longer in a cooler state. Radiators are 100% shock-mounted for long life.



Maximised air flow for enhanced cooling



O-ring face seals on all high pressure hydraulic connections eliminate the need for thread sealants creating leak-free joints. A superior filtration system increases the life span of all hydraulic components.

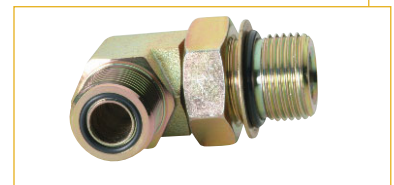
### Intellix Vehicle System Manager (VSM)

This innovative, highly advanced on-board computer is, essentially, the sort of electronic management system that is extensively used in the automotive industry. It controls the engine and transmission by monitoring and protecting the lift truck.

A sensitive computer like this needs protection, so it is environmentally sealed to keep out water and debris. Furthermore, CANbus electronics reduce the complexity of the wiring, which have been routed well away from all heat sources.



Combi-Cooler Radiator used on 4000kg – 5500kg Models



O-ring face seals on all high pressure, hydraulic connections

## TRUE PRODUCTIVITY

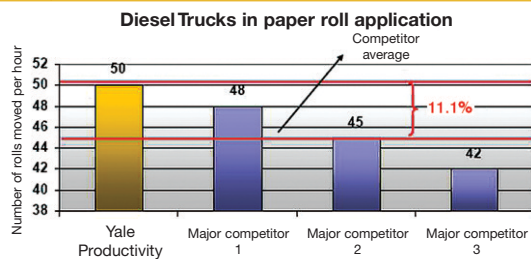
## Performance

Every single facet of each Veracitor VX lift truck has been designed to boost performance and to increase productivity. This is true of all Veracitor VX configurations. What's more, the Yale Veracitor VX models have been designed to meet, and exceed, your specific application requirements. The Yale Veracitor VX Series productivity cost savings are achieved through lower lift truck operating expenses, reduced labour costs, reduced operator overtime expense and additional savings from increased throughput.

Yale Veracitor VX lift trucks out-performed the major competition on an identical test cycle. The combination of engine and transmission options allows our lift trucks to be tailored to your specific applications.

The Yale 4000kg - 5500kg Productivity lift truck delivers maximum performance in heavy-duty applications. The Yale Value lift truck provides excellent performance for medium to heavy-duty applications and is optimised for the lowest

hourly cost of operation. The Yale Base lift truck offers first-rate performance for light to medium-duty applications and is geared to minimise your cost of acquisition, without compromising performance.



## TRUTH N°3

Intellix VSM (Vehicle System Manager) maximises driver efficiency and reduces downtime.

**Three Engine Options**

The Yale 4000kg - 5500kg Veracitor VX Series has three engine options to provide application flexibility with outstanding operating costs.

<b>LP Gas Engine</b>	GM 4.3L
<b>Diesel Engines</b>	Kubota 3.6 L, Kubota 3.8 L

**Four Transmission Options available:****Standard Electronic Powershift**

One speed or Two speed forward/one speed reverse

**Techtronix 100**

One speed forward/One speed reverse

**Techtronix 100X**

Two speed forward/One speed reverse

**Techtronix 200X**

Two speed forward/One speed reverse

All of these transmissions feature smooth electronic inching, electronic shift and neutral start/brake interlock.



#### TRUTH N°4

The Auto Deceleration System (ADS) and the Dynamic Auto Deceleration System (DADS) reduces brake usage, leading to fewer brake shoe replacements, and lower service costs.

#### Techtronix 100 and 100X transmissions

These two transmissions maximise the advantages of **Auto Deceleration System (ADS)**. This feature slows the truck automatically without the operator needing to use the footbrake. It can be programmed to suit the operator or the application requirements, reducing operator fatigue and reducing brake shoe wear which, in turn, lowers truck operating costs.

#### Controlled Power Reversal (CPR)

A unique feature that prevents the operator from spinning the tyres when changing direction whilst the engine is at full throttle. This feature removes all dynamic powertrain stress, whilst delivering cost savings on fuel consumption and expensive tyre replacements.

Controlled Roll-Back. (CRB). A controlled ramp descent feature that limits truck rollback to 75mm per second. This feature is particularly important when loading and unloading on gradients or inclines.

#### Techtronix 200X transmission

This transmission provides all the functionality of

the 100 and 100X transmissions with the additional enhanced features.

#### Auto speed hydraulics (ASH)

Engine speed automatically increases independent of any operator intervention to provide full hydraulic power to the hoist function while the travel speed remains constant.

#### Dynamic Auto Deceleration System (DADS)

This allows the operator to reduce the speed of the truck without using the brake. The rate of braking is determined by the programmable dashboard settings 1-10. The rate of deceleration can be controlled further by the rate at which the operator releases his foot from the accelerator pedal.

#### Throttle Response Management (TRM)

This allows the operator to control travel speed according to the position of his foot on the accelerator pedal. This provides him with the ability to maintain the required travel speed on a gradient without the need to depress or release the accelerator pedal.

#### Extended Draw Bar Pull

Available in first gear, particularly useful when fully laden and significant and frequent gradients are encountered. Second gear provides maximum engine efficiency for applications where longer travel distances are required.

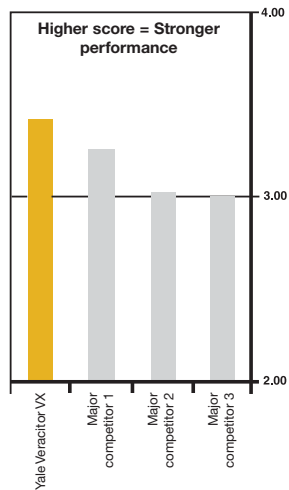
#### Continuous Stability Enhancement system (CSE)

This system enhances each lift truck's lateral stability with a simple, maintenance-free design that does not compromise uneven surface travel.



## TRUE COMFORT

## Intelligent Ergonomics



The truth of the matter is that operators prefer Veracitor VX lift trucks. Results from an independent survey of a representative sample of lift truck operators confirm this: Comfort is enhanced due to the innovative design of the operator's compartment.

The isolated powertrain and Full Suspension Seat provide best in class Whole-Body Vibration levels of  $0.6\text{m/s}^2$ , helping to reduce fatigue, aches and pains and ensuring that the operator remains comfortable and productive. Excellent operator visibility is afforded through the Yale Hi-Vis™ mast and Command Driving Position. Other key features include: the optimised step height, increased shoulder clearance, easy right-sided access and ergonomically designed controls.

Rear driving comfort has been improved with a convenient, rear drive handle complete with horn button, optimally placed on the rear overhead guard leg. The rear drive handle, in conjunction with an optional swivel seat, creates a comfortable and secure working environment. A smaller steering wheel and the infinitely adjustable steer column accommodate operators of all sizes.



\*Source: Ergonomic Centre of North Carolina, USA.





Low step height provides easy entry and exit. The standard cowl-mounted, manual hydraulic levers offered on the Base Models also allow easy access for right-side entry/exit. Yale Accutouch mini levers are offered as an option on the base model. Yale's rounded overhead guard design provides extra shoulder entry and headroom.

#### **Hydraulic Control Lever Options**

The Yale Accutouch, electro-hydraulic control option offers excellent ergonomic design with shorter reach and throw levers. This means that considerably less effort is required for operation, compared to manual hydraulic levers. The fully adjustable armrest is contoured for maximum comfort and flexibility and minimum muscle and joint strain and - in addition to the hydraulic functions - features a horn and direction switch, ensuring that all key truck functions are within constant, easy reach.



#### **TRUTH N°5**

Intellix VSM (Vehicle System Manager) is a diagnostic computer that maximises uptime by monitoring and protecting all key functions.

#### **Auto Deceleration System and Dynamic Auto Deceleration System**

The Auto Deceleration System (ADS), which is standard on the Yale Techtronix 100 and 100X transmissions, reduces brake pedal usage and subsequently operator leg fatigue.

It is programmable via the operators dash display.

The Dynamic Auto Deceleration System (DADS) performs in the same way and is programmable through the dash display. It is controlled by the operator and activated by the release of the accelerator pedal, the braking affect being directly proportional to the accelerator pedal position.

#### **EZ - LP Gas Tank Bracket**

The optional EZ-Tank Bracket is an added feature on the standard swing-out bracket. The LP tank swings out and drops down approximately 60 degrees for effortless removal and installation.



## TRUE VALUE

# Low Cost of Ownership

## TRUTH N°6

Our Robust Clutch Packs last three times longer than normal clutch systems – saving you time and money.

The purchase price of a lift truck is only a small part of the overall cost. Cost of ownership accounts for the largest portion of expenditure and this includes such elements as periodic maintenance, unscheduled repairs, tyres, brakes and fuel costs.

Yale engineers focused on delivering customer cost savings with additional engine and transmission options, increased hydraulic efficiency and world-class serviceability.

The Veracitor VX Value truck offers substantial operating cost savings over the competition.

The world-class dependability of the Veracitor VX Series has reduced the cost to operate these lift trucks through a

selection of rugged powertrain configurations, radiator design, reliable electronics and truly exceptional hydraulics.

The Techtronix transmissions offer improved tyre and fuel costs through controlled direction changes. Yale's engine options contribute to reduced operating costs.

The GM 4.3L LP Gas engine, in conjunction with the Kubota 3.6L and 3.8L Diesel engines, delivers outstanding fuel economy, with competitive performance.

The available Load Sensing Hydraulics system delivers increased operational efficiency, as the engine only supplies power to the hydraulic pumps when required. This delivers increased responsiveness and acceleration, which helps to maximise productivity and lower fuel consumption, reducing overall operating costs.

Intellix VSM, the smart Vehicle System Manager, maximises driver efficiency by managing fast direction changes that reduce tyre spin and wear. Intellix VSM maximises uptime by monitoring and protecting key lift truck functions.



## TRUTH N°7

The unique Techtronix Transmission provides controlled power reversal, virtually eliminating tyre spin, prolonging tyre life and reducing fuel costs.

Brake life is significantly improved with the Auto Deceleration System (ADS), a standard feature on the Techtronix 100 and 100X, and the Dynamic Auto Deceleration System (DADS), standard on the Techtronix 200X. These features automatically slow the lift truck when the throttle pedal is released. This action minimises brake usage requirement and operator fatigue, whilst reducing associated brake costs.

Oil immersed brakes are standard on the 4000 - 5500 kg trucks. They further contribute to lowering operating costs by virtually eliminating brake maintenance. These long life brakes are fully sealed against contamination making them ideal for tough and demanding environments.

The Controlled Power Reversal (CPR) system is a unique feature that prevents the operator from spinning the tyres when changing direction whilst the engine is at full throttle. This feature removes all dynamic powertrain stress, whilst delivering cost savings on fuel consumption and expensive tyre replacements.

Yale has improved the serviceability of the Veracitor VX Series – reducing the labour costs associated with periodic

maintenance and unscheduled repairs. Veracitor VX lift trucks offer best in class service access with a one-piece, rear-opening hood providing cowl-to-counterweight access. An easy to remove floor plate requires no tools and offers complete access to the powertrain. Simplified daily checks and reduced service requirements result in lower maintenance costs.



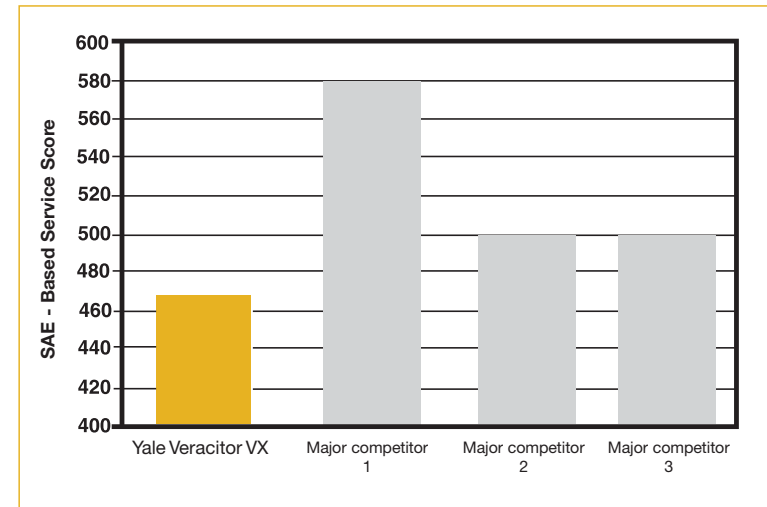
## TRUE SERVICEABILITY

The Veracitor VX Series has been designed to be extremely easy to service as well as requiring less maintenance. From the rear-opening, one-piece hood and on-board diagnostics, to the most comprehensive parts availability in the industry, the Veracitor VX sets new standards in lift truck serviceability.



### TRUTH N°8

We offer the most reliable and comprehensive parts program available in the industry, maximising your productivity.



By utilising cutting edge technology and superior manufacturing facilities, Yale engineers have delivered the highest serviceability ratings in the industry. This chart represents the Society of Automotive Engineers (SAE) based rating, evaluating speed and difficulty of over 30 service routines. A lower score indicates easier serviceability.

Source: NMHG Counterbalanced Development Centre.

### Maximum Access

The Veracitor VX has a rear-opening, one-piece hood that opens an impressive 75 degrees. Coupled with the one-piece floor plate, it provides excellent cowl-to-counterweight access. All engine compartment daily checks are located on the same side of the lift truck for quick identification and access.

The uncluttered layout under the hood offers clean hydraulic and electrical routings.

The radiator is easy to access and the filler cap and optional radiator lint screen can be removed without the use of tools. The coolant recovery bottle is easily visible to check levels. A coolant fill neck is located so that it's easy to reach.

The Intellix VSM, Vehicle Systems Manager continuously monitors lift truck functions and immediately alerts the operator to any service needs. Extensive on-board diagnostics on the advanced dash display communicates service codes, enabling quick and accurate repairs. PC-based diagnostics also enable fast and precise troubleshooting facilitating first-time fixes.



Yale has reduced regular service requirements on the Veracitor VX and automatic electronic inching eliminates the need for periodic adjustment. The Auto Deceleration System (ADS) and the Dynamic Auto Deceleration system (DADS) reduces brake usage, leading to decreased brake maintenance and shoe replacement. Oil immersed brakes contribute to reduced cost of operation.

All these reductions in lift truck service, reduce cost and improve profitability.

The Yale difference can be summed up in one, highly successful formula, which clearly illustrates why every Veracitor VX in the range is a truly remarkable lift truck.

World Class Dependability + Superior Serviceability

**LOW COST OF OWNERSHIP**



## VERACITOR VX SERIES

# Choices and Versatility

The Veracitor VX Series is available in three configurations to meet and exceed your material handling application requirements.  
(Application guideline only)



Lift Truck Type	Base	Value	Productivity
Design Objective	lowest acquisition cost	minimum cost per hour	max. loads moved per hour
Lift Truck Usage	8 - 15 hours per day	16 - 24 hours per day	12 - 24 hours per day
Ramp Usage	frequent	frequent/steep	intensive
Extended Drawbar Pull	none	minimum	maximum
Hydraulic Attachments	sideshift/fork positioner	attachment usage	high attachment usage
Lift Height	less than 3500mm	3500mm - 4500mm	more than 4572mm
Grade Capability	less than 5%	5% - 10%	more than 10%
Environment	clean/dry	variable	variable
Load Capacity	general type	variable loads	frequently near capacity

### Engine option overview

Model	Capacity	Base		Value		Productivity	
		Diesel	LPG	Diesel	LPG	Diesel	LPG
		Kubota	GM	Kubota	GM	Kubota	GM
40 VX	4000kg	3.6L	4.3L	3.8L	4.3L	3.8L	4.3L
45 VX	4500kg	3.6L	4.3L	3.8L	4.3L	3.8L	4.3L
50 VX	5000kg	3.6L	4.3L	3.8L	4.3L	3.8L	4.3L
55 VX	5500kg	3.6L	4.3L	3.8L	4.3L	3.8L	4.3L

### Engines

#### LP Gas

##### GM 4.3L

Power = 77kW @ 2400rpm  
Torque = 305Nm @ 2400rpm  
Max rpm 2400

#### Diesel

##### Kubota 3.6L\*

Power = 57kW @ 2200rpm  
Torque = 296Nm @ 1400rpm  
Max rpm 2400

##### Kubota 3.8L\*\*

Power = 55kW @ 2200rpm  
Torque = 309Nm @ 1400rpm  
Max rpm 2200

*\*Kubota V3600 Diesel engine is only available in territories with category 1 diesel fuel, which contains sulphur levels of over 500ppm. This engine is not compatible with (<500ppm) or Ultra-Low (<15ppm) sulphur diesel fuel.*

*\*\*Kubota V3800 3.8L Diesel engine is equipped with a cooled EGR system, which requires the use of Low (<500ppm) or Ultra-Low (<15ppm) sulphur fuel.*

### Transmissions

#### Standard Electronic 1 or 2-speed Powershift\*

##### Base Model

One or Two speed Electronic shift control.  
Smooth hydraulic inching. Neutral start switch.  
Anti-restart protection.  
Premium wet brakes.

*\*The Standard Electronic Powershift transmission engine is available with Kubota V3600 only.*

#### Techtronix 100

##### Value Model

One-speed.  
Heavy-duty clutch packs.  
Electronic inching.  
Auto Deceleration System (ADS).  
Controlled Power Reversal (CPR).  
Controlled Roll-back (CRB).  
Standard wet brakes.

#### Techtronix 100X

##### Value Model

All Features of Techtronix 100.  
Two-speed auto shift - (2 x forward / 1 x reverse).  
Extended Draw Bar Pull (EDBP).  
Standard or Premium wet brakes.

#### Techtronix 200X

##### Productivity Model

All Features of Techtronix 100 and 100X.  
Two-speed auto shift-(2 x forward 1 x reverse).  
Dynamic Auto Deceleration System (DADS).  
Throttle Response Management (TRM).  
Auto Speed Hydraulics (ASH).  
Premium wet brakes.

### Hydraulic Control

#### Base Model

Manual cowl mounted levers - Standard.  
Easy-reach ergonomic design.  
Excellent right-side access.

**Option** - E-Hydraulic Accutouch mini-lever, Fingertip activation, Best-in-class comfort

#### Value Model

E-Hydraulic Accutouch mini lever - Standard, Fingertip activation, Best-in-class comfort.  
Excellent right-side access.

**Option** - E Hydraulic PalmTech Joystick, All-in-one control. Leading edge design.

**Option** - Manual cowl mounted Levers, Easy-reach ergonomic design.

#### Productivity Model

E-Hydraulic Accutouch mini-lever - Standard, Fingertip activation, Best-in-class comfort.  
Excellent right-side access.  
Best-in-class comfort

**Option** - E-Hydraulic PalmTech Joystick, All-in-one control, Leading edge design.



## VERACITOR VX SERIES

# Highlights and Options



Productivity highlights and options	Base	Value	Productivity
<b>All LP Gas and Diesel Applications</b>			
CSE (Continuous Stability Enhancement)	Std	Std	Std
Yale Global Hi-Vis™ mast	Std	Std	Std
Hall effect sensors and switches feature solid-state components - No adjustments	Std	Std	Std
Sealed electrical connectors keep out water and debris	Std	Std	Std
Directional change lever	Std	Std	Std
Oil immersed brakes	Opt	Opt	Std
<b>Techtronix 100 transmission</b>	<b>Std</b>		
One-Speed	✓		
Heavy-Duty Clutch Packs	✓		
Electronic Inching	✓		
Auto Deceleration System (ADS) – smooth auto braking	✓		
Controlled power reversal feature (CPR) – reduces tyre wear up to 50%	✓		
Controlled Roll-back on ramps (CRB) – enhances driver control	✓		
<b>Techtronix 100X transmission</b>		<b>Std</b>	
All the features of the Techtronix 100		✓	
Two-speed auto shift (2x forward/1x reverse)		✓	
Extended Draw Bar Pull (EDBP)		✓	
<b>Techtronix 200X transmission</b>			<b>Std</b>
All the features of the Techtronix 100X			✓
Throttle Response Management (TRM)			✓
Auto Speed Hydraulics (ASH)			✓
Automatic Inching Control			✓
Accutouch Mini Lever electro-hydraulic controls	Opt	Std	Std
Palmtech Joystick, electro-hydraulic control handle	–	Opt	Opt
Return-to-set tilt	Opt	Opt	Opt
Rear drive handle with horn button	Std	Std	Std
Full suspension seat	Std	Std	Std
Full suspension swivel seat	Opt	Opt	Opt
Swing-out, drop-down EZ-Tank Bracket	Opt	Opt	Opt
Single inch/brake pedal	Std	Std	Std
Foot directional control	Opt	Opt	Opt
Front and rear work lights	Std	Std	Std
Mirrors – rear/side view	Opt	Opt	Opt
Quick disconnect with extension tubes	Opt	Opt	Opt
Productivity Package	Opt	Opt	Opt

## VERACITOR VX SERIES

# Highlights and Options

Dependability highlights and options	Base	Value	Productivity
<b>All LP Gas and Diesel Applications</b>			
Rugged Powertrain	Std	Std	Std
Powertrain protection system	N/A	Opt	Opt
Intellix VSM (Vehicle Management System)	Std	Std	Std
Premium electronic monitoring	Opt	Opt	Opt
100% shock-mounted radiator	Std	Std	Std
Combi Cooler radiator	Std	Std	Std
CANbus electrical system	Std	Std	Std
Solid-state Hall Effect sensors - no adjustments required	Std	Std	Std
Sealed electrical connections	Std	Std	Std
Keyless start (with auxiliary key switch)	Opt	Opt	Opt
LED Brake and Backup Lights	Std	Std	Std
Precise wire harness routings	Std	Std	Std
Sealed dash display	Std	Std	Std
Drive lights and rear works lights with halogen bulbs	Std	Std	Std
Electronic horn	Std	Std	Std
O-ring face seal hydraulic fittings	Std	Std	Std
10-micron high performance in-tank hydraulic oil filter	Std	Std	Std
Electronically controlled transmissions	Std	Std	Std
Counterweight designed to maximise air flow - enhanced cooling	Std	Std	Std
High air intake with pre-cleaner	Opt	Opt	Opt
Accumulator	Opt	Opt	Opt
Traction Speed Limiter	N/A	Opt	Opt
FleetCare Package	N/A	Opt	Opt

Note: Std = Standard, Opt = Optional, N/A = Not Available

LiftTruck performance may be affected by the condition of the vehicle, how it is equipped and the application. Consult your Yale Industrial Truck Dealer for further information. Specifications are subject to change without notice.

Ergonomic highlights and options	Base	Value	Productivity
<b>All LP Gas and Diesel Applications</b>			
Infinite adjustment steer column	Std	Std	Std
Optimised step height 425mm	Std	Std	Std
Excellent mast visibility	Std	Std	Std
Excellent rearward visibility	Std	Std	Std
Dash display positioned for optimum visibility	Std	Std	Std
Low brake pedal effort	Std	Std	Std
Small 30cm steering wheel with spinner knob	Std	Std	Std
Single inching/brake pedal with excellent ergonomic positioning	Std	Std	Std
Conveniently located storage compartment	Std	Std	Std
Isolated powertrain	Std	Std	Std
Enhanced insulated non-metallic hood	Std	Std	Std
Auto Deceleration System (Techtronix 100 and 100X transmissions)	Std	Std	N/A
Dynamic Auto Deceleration System	N/A	N/A	Std
Conveniently located cowl-mounted hydraulics	Std	N/A	N/A
Accutouch Mini Lever electro-hydraulic controls with fully adjustable armrest	Opt	Std	Std
Palmtech Joystick, electro-hydraulic control handle	N/A	Opt	Opt
Low noise hydraulic pump	Std	Std	Std
Floormat	Std	Std	Std
Swing out LP tank bracket	Std	Std	Std
Swing-out, drop-down EZ-Tank Bracket	Opt	Opt	Opt
Return-to-set tilt	Opt	Opt	Opt
Rear drive handle with horn button	Std	Std	Std
Full suspension seat	Std	Std	Std
Full suspension swivel seat	Opt	Opt	Opt
Single inch/brake pedal	Std	Std	Std
Foot directional control pedal	Opt	Opt	Opt
Load Weight Indicator	Opt	Opt	Opt

# VERACITOR VX SERIES

## Highlights and Options

Cost of Ownership highlights and options	Base	Value	Productivity
<b>All LP Gas and Diesel Applications</b>			
Heavy-duty "Combi-Cooler" radiator	Std	Std	Std
Electronically controlled transmissions	Std	Std	Std
Counterweight designed to maximise air flow	Std	Std	Std
Electronic systems monitoring	Std	Std	Std
Auto Deceleration System (Techtronix 100 and 100X transmissions)	Std	Std	N/A
Dynamic Auto Deceleration System	N/A	N/A	Std
Controlled power reversal	Std	Std	Std
Throttle response management	N/A	N/A	Std
Oil immersed brakes	Std	Std	Std
Powertrain protection system	N/A	Opt	Opt
Premium monitoring package	Opt	Opt	Opt
Impact monitor	Opt	Opt	Opt
Load Weight Display	Opt	Opt	Opt
High intake with pre-cleaner	Opt	Opt	Opt
Paper applications kit	Opt	Opt	Opt
Accumulator	Opt	Opt	Opt
Vented hood	Opt	Opt	Opt
Radiator lint screen	Opt	Opt	Opt
Traction speed limiter	N/A	Opt	Opt
Operator password	Opt	Opt	Opt
FleetCare package	Opt	Opt	Opt
Rental package	Opt	Opt	Opt
Attachment carriage	Std	Std	Std
Integral side shift carriage	Opt	Opt	Opt



Service highlights and options	Base	Value	Productivity
<b>All LPG and Diesel Applications</b>			
Cowl-to-counterweight access	Std	Std	Std
Easy floorplate removal – no tools required	Std	Std	Std
On-board diagnostics with advanced dash display	Std	Std	Std
PC-based diagnostics enabling fast and accurate troubleshooting	Std	Std	Std
Daily checks located on same side of truck and colour coded for quick identification	Std	Std	Std
Uncluttered layout with superb hydraulic and electrical routings	Std	Std	Std
Superior filtration system	Std	Std	Std
Intellix VSM (Vehicle Management System)	Std	Std	Std
CANbus electrical system	Std	Std	Std
Robust transmission clutch packs	Std	Std	Std
Sealed electrical connectors	Std	Std	Std
O-ring face seal on all high pressure hydraulic connections	Std	Std	Std
Hall effect sensors and other solid state components require no adjustment	Std	Std	Std
Oil immersed brakes	Std	Std	Std
Operator password	Opt	Opt	Opt
Halogen bulbs utilised on drive and work lights	Std	Std	Std
Premium monitoring system	Opt	Opt	Opt
Paper applications kit	Opt	Opt	Opt
Powertrain protection system	N/A	Opt	Opt
LED brake and reverse lights	Std	Std	Std
LED work lights	Opt	Opt	Opt
Vented hood	Opt	Opt	Opt
Swing-out, drop-down EZ-Tank Bracket	Opt	Opt	Opt

**NACCO Materials Handling Limited** trading as **Yale Europe Materials Handling**  
Flagship House, Reading Road North, Fleet, Hampshire GU51 4WD, United Kingdom.  
Tel: + 44 (0) 1252 770700 Fax: + 44 (0) 1252 770784

**[www.yale-forklifts.eu](http://www.yale-forklifts.eu)**

Country of Registration: England. Company Registration Number: 02636775



**Safety.** This truck conforms to the current EU requirements. Specification is subject to change without notice. Yale, VERACITOR and  are registered trademarks. "PEOPLE, PRODUCTS, PRODUCTIVITY", PREMIER, Hi-Vis, and CSS are trademarks in the United States and certain other jurisdictions. MATERIALS HANDLING CENTRAL and MATERIAL HANDLING CENTRAL are Service Marks in the United States and certain other jurisdictions.  is a Registered Copyright. © Yale Europe Materials Handling 2013. All rights reserved.

Truck shown with optional equipment

Printed in The United Kingdom (0713.50HG) EN  
Publication part no. 290000250 Rev.03